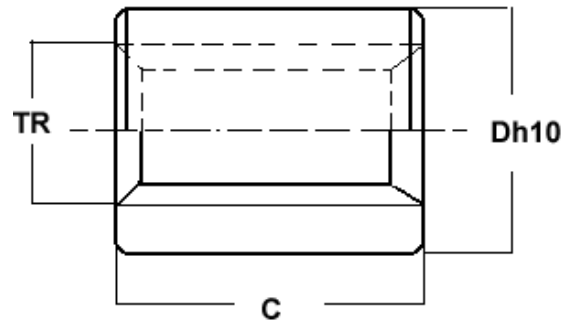




Trapezoidal Cylindrical Nut



	Dimensions in mm			Weight g
	D	C	contact mm ²	
LRM 10-2*	22	20	200	53
LRM 12-3*	26	24	280	83
LRM 12-6P3				
LRM 14-3*	30	28	380	135
LRM 14-6P3				
LRM 16-4*	36	32	490	232
LRM 16-8P4				
LRM 18-4*	40	36	630	320
LRM 18-8P4				
LRM 20-4*	45	40	790	455
LRM 20-8P4				
LRM 22-5*	45	44	940	480
LRM 22-10P5				
LRM 24-5*	50	48	1130	656
LRM 24-10P5				
LRM 26-5*	50	52	1340	670
LRM 28-5*	60	56	1570	1102
LRM 28-10P5				
LRM 30-6*	60	60	1780	1140
LRM 30-12P6				
LRM 32-6*	60	64	1910	1177
LRM 32-12P6				
LRM 36-6*	75	72	2610	2189
LRM 36-12P6				
LRM 40-7*	80	80	3210	2725
LRM 40-14P7				
LRM 44-7*	80	88	3920	2815
LRM 50-8*	90	100	5060	4014
LRM 60-9*	100	120	7320	5150
LRM 70-10*	110	140	10000	7805

Material CuSn8p (Red Bronze)

ISO 2901/2903 - DIN 103 Tolerance H7

* Available as Left (G) and Right (D) Hand Lead

Part number "P" indicates the number of starts. I.e P3 = 3 starts.